



- [GOAL Events](#)
- [Advocate Magazine](#)
- [Aquademia Podcast](#)
- [Blog](#)
- [Contact](#)
-
-
-
-
-
- [Log In](#)



- [About](#)
 - [Who We Are](#)
 - [Our History](#)
 - [Our Team](#)
 - [Sustainable Development Goals](#)
 - [Careers](#)
- [Membership](#)
 - [Overview](#)
 - [Our Members](#)
 - [Corporate Membership](#)
- [Resources](#)
- [Certification](#)
 - [Best Aquaculture Practices](#)
 - [Best Seafood Practices](#)

Search...



[Log In](#)

- [About](#)
 - [Who We Are](#)
 - [Our History](#)
 - [Our Team](#)
 - [Sustainable Development Goals](#)
 - [Careers](#)
- [Membership](#)
 - [Overview](#)
 - [Our Members](#)
 - [Corporate Membership](#)
- [Resources](#)
- [Certification](#)
 - [Best Aquaculture Practices](#)
 - [Best Seafood Practices](#)
- [GOAL Events](#)
- [Advocate Magazine](#)
- [Aquademia Podcast](#)
- [Blog](#)
- [Contact](#)



Health & Welfare
Health & Welfare

Larviculture of the West Indian pointed venus



28 January 2019 Priscilla Celes Maciel de Lima, M.Sc. Dr. Danielli M.M. Dantas Dr. Isabela Oliveira Jéssika Lima de Abreu, M. Sc. Eng. Carlos Yure Barbosa de Oliveira Prof. Dr. Alfredo Olivera Gálvez



Studies of culture densities relevant to restocking efforts and aquaculture development



The West Indian pointed venus (*Anomalocardia brasiliiana*), is an important seafood resource in northeastern Brazil and elsewhere in its geographic distribution.

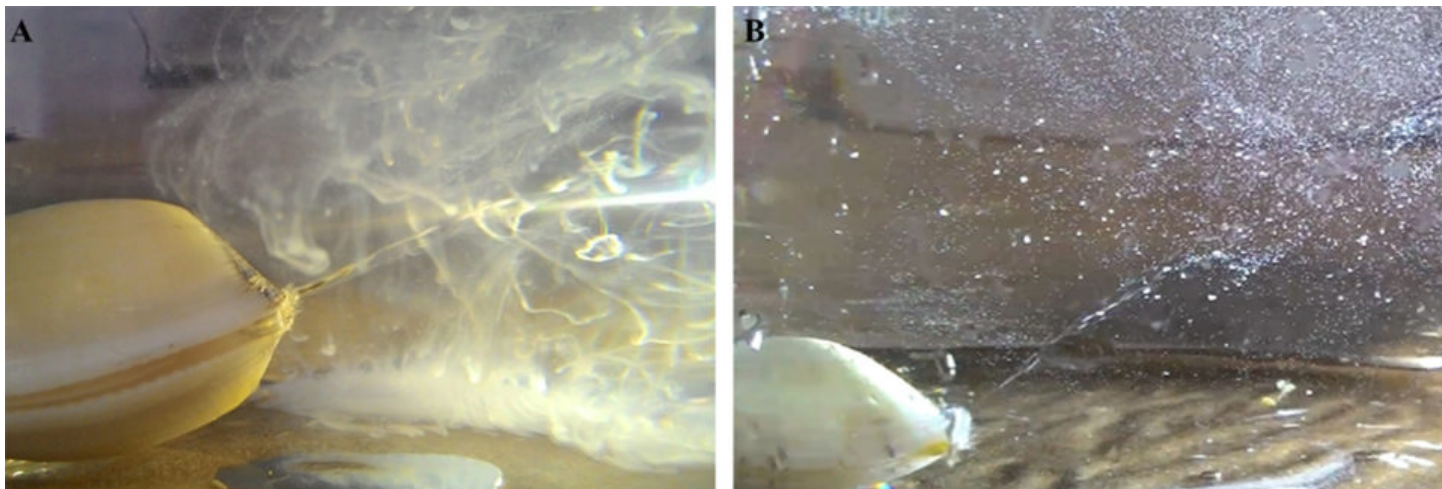
The farming of mollusks is an important component of aquaculture around the world, but the viable culture of many valuable species still faces various obstacles, including the lack of proper methodologies for domesticating native species.

The West Indian pointed venus (*Anomalocardia brasiliiana*) is a fishing resource of great importance for Brazilian fisheries. This bivalve mollusk occurs naturally in shallow waters, particularly in mangrove lagoons, and is found in the intertidal zone down to a depth of 1.5 meters, where it buries in muddy bottoms. Adults typically settle in with fine or coarse sand areas where environmental conditions are harsher during low tides.

The fisheries of *A. brasiliiana* are based on extraction in natural banks by inhabitants of coastal communities, and uncontrolled exploitation and environmental degradation can compromise its populations. In the state of Pernambuco in northeast Brazil, the traditional communities that capture the species have reported a reduction in the size of individuals harvested, even though there are no recent data on production or fishing in the state.

Such declines in the natural bank populations of bivalve molluscs throughout the world have provided the incentive for studies on their larviculture, because the production of juveniles in hatcheries and laboratories is an alternative to mitigate and supply seedstock to help support the extractive demand on natural stocks and for the development of mariculture operations.

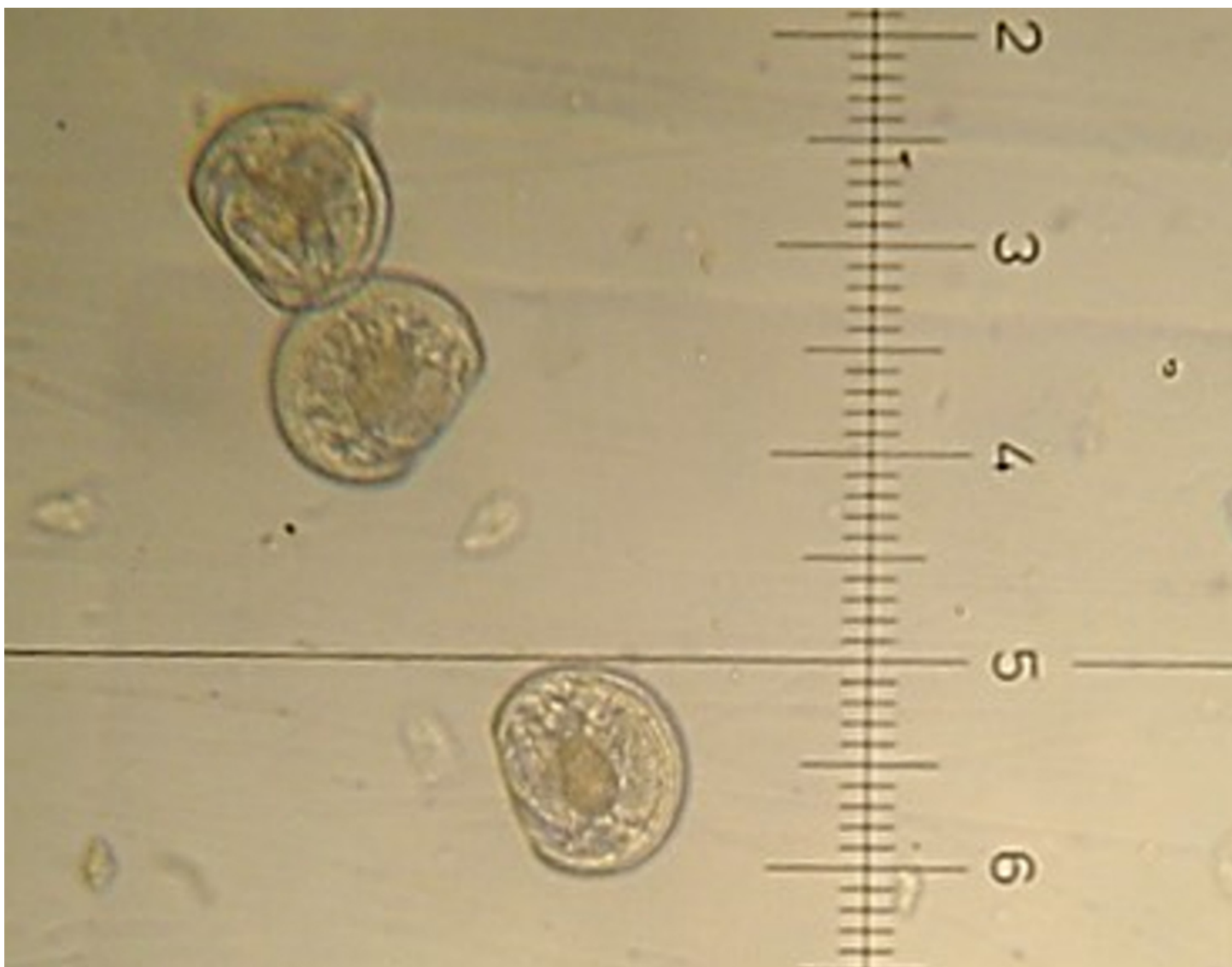
We are studying the reproductive development of *A. brasiliiana* in closed systems at the Sustainable Mariculture Laboratory of the Fisheries and Aquaculture Department, Federal Rural University of Pernambuco in northeastern Brazil, and here report on some of our results developing larviculture methods for this species.



Spawning of *A. brasiliana* males (A) and females (B) after induction for gametes release by addition of microalgae (200,000 cells/mL) and temperature manipulation.

Study of veliger stage development

In the first experiment, the effect of stocking densities (2, 6 and 10 larvae/mL) on veliger larvae was evaluated. The animals were fed microalgae – *Chaetoceros calcitrans* and *Isochrysis galbana* – at a 1:1 ratio and concentrations of 30,000 cells/mL. The larvae used in the first experiment had an initial length of $(88.76 \pm 3.75 \text{ mm})$; see image below), and were cultured for seven days, when the morphological differentiations of metamorphosis begin.



A. brasiliana D-larvae cultured in the first test for seven days at different stocking densities.

Study of post-larvae development

We evaluated the effect of stocking density on the growth and survival of *A. brasiliana* post-larvae (at 15 days of age; see image below). Three densities were evaluated: 40, 80 and 160 post-larvae per cubic centimeter. The specimens (307.89 ± 50.92 mm in average length) were fed two microalgae – *C. calcitrans* and *Palvova lutheri* – at a 1:1 ratio and a different algal concentration in each larval stage. This experiment lasted 28 days.

In both experiments, proper management ensured that the water quality parameters were within optimal ranges.

A. brasiliana post-larvae after 15 days of culture during the second test at different stocking densities.

Results

In the first test, the survival of *A. brasiliana* veliger larvae was higher using the densities 2 and 6 larvae/mL (Fig. 1). At the end of the experiment, the treatments with 2 and 6 larvae/mL had the best results of survival and growth, 55.91 percent and 166.80 μ m, and 65.55 percent and 155.95 μ m, respectively. They differed significantly from the treatment with 10 larvae/mL, both in survival and in growth. After seven days, the animals cultured at the densities of 2 and 6 larvae/mL grew from 88.76 mm to about 160 mm of length.

Fig. 1: Larval survival ratio – with mean and standard deviation – after seven days at different stocking densities.

In the second experiment, post-larvae at densities of 40 and 80 animals per cubic centimeter showed similar survivals, about 53 percent (Fig. 2). However, post-larvae cultured at a density of 40 animals per cubic centimeter had a significantly larger length ($1249.77 \pm 27.08 \mu\text{m}$). Post-larvae cultured at the highest stocking density (160 post-larvae per cubic centimeter) had lower average lengths of $791.21 \mu\text{m}$ ($p < 0.05$) by day 28 of the experiment.

Fig. 2: Larval survival of *A. brasiliana* after 28 days of culture and at different stocking densities. Means with different characters differ significantly ($p < 0.05$).

Because no differences in length were observed during the first 21 days of culture at the three densities tested, we suggest the use of the highest density (160 post-larvae per cubic centimeter) up to 21 days, and then reducing the culture density to 40 post-larvae per cubic centimeter until animals reach the desirable length.

Research supporting the restocking of natural populations as well as the development of mariculture of the West Indian pointed venus is an important initiative.

Perspectives

Our results show that density interferes in the development of larvae and post-larvae of *A. brasiliانا* grown in a static system. We can conclude that the density for veliger larvae should be 6 larvae/mL and 160 post-larvae per cubic centimeter after settlement. This density can be used until the post-larvae reach 600 μm in length, then they should be in density of 40 post-larvae per cubic centimeter.

These results are very relevant to restocking efforts to support the extractive fisheries from natural banks and also for the development of aquaculture of *A. brasiliانا*.

Now that you've finished reading the article ...

... we hope you'll consider supporting our mission to document the evolution of the global aquaculture industry and share our vast network of contributors' expansive knowledge every week.

By becoming a Global Seafood Alliance member, you're ensuring that all of the pre-competitive work we do through member benefits, resources and events can continue. Individual membership costs just \$50 a year.

Not a GSA member? Join us.


[Support GSA and Become a Member](#)

Authors

-  Priscilla Celes Maciel de Lima, M.Sc.


Priscilla Celes Maciel de Lima, M.Sc.

Universidade Federal Rural de Pernambuco
Fisheries and Aquaculture Department
Recife, Brazil

-  Dr. Danielli M.M. Dantas


Dr. Danielli M.M. Dantas

Universidade Federal Rural de Pernambuco
Academic Unit of Serra Talhada
Serra Talhada, Brazil

-  Dr. Isabela Oliveira


Dr. Isabela Oliveira

Instituto Federal de Educação
Ciência e Tecnologia de Sergipe
Campus Estância
Estância, Brazil

-  Jéssika Lima de Abreu, M. Sc.

Jéssika Lima de Abreu, M. Sc.

Universidade Federal Rural de Pernambuco
Fisheries and Aquaculture Department
Recife, Brazil

-  Eng. Carlos Yure Barbosa de Oliveira

Eng. Carlos Yure Barbosa de Oliveira

Universidade Federal de Santa Catarina
Aquaculture Department
Florianópolis, Brazil




-  Prof. Dr. Alfredo Olivera Gálvez

Prof. Dr. Alfredo Olivera Gálvez

Corresponding author
Universidade Federal Rural de Pernambuco
Fisheries and Aquaculture Department
Recife, Brazil

[109,111,99,46,111,111,104,97,121,64,118,105,108,111,95,111,100,101,114,102,108,97]

Share

-  [Share via Email](#)
-  [Share on Twitter](#)
-  [Share on Facebook](#)

- [in Share on LinkedIn](#)

Tagged With

[Anomalocardia brasiliiana](#) [larviculture](#) [Alfredo Olivera Galvez](#) [Priscilla Celes Maciel de Lima](#) [Danielli M.M. Dantas](#) [Isabela Oliveira](#) [Jéssika Lima de Abreu](#) [Carlos Yure Barbosa de Oliveira](#) [West Indian Pointed Venus](#)

Related Posts

Innovation & Investment

[Artemia, the ‘magic powder’ fueling a multi-billion-dollar industry](#)

Artemia, microscopic brine shrimp used as feed in hatcheries, are the unsung heroes of aquaculture. Experts say artemia is still inspiring innovation more than 50 years after initial commercialization. These creatures are much more than Sea-Monkeys.

Aquafeeds

[Live diets for larval fish, shrimp: Production, enrichment, feeding strategies](#)

Live diets for reared marine larvae must be cost-effective and versatile while providing good nutrition and being easily captured and digested. Copepods offer superior nutritional value, but their rearing requires space and is laborious.

Intelligence

[Uncertain times for oyster larvae production in North America](#)

Oyster larvae producers say information sharing and perseverance are seeing them through a prolonged stretch of high larval-stage mortalities.

Responsibility

[Aquaculture gives endangered totoaba a fighting chance](#)

The tenuous fate of a pint-sized porpoise, the critically endangered vaquita, is linked to a fish targeted by poachers fueling China's appetite for maws. The vaquita remains in peril, but aquaculture presents some hope for the totoaba.

About The Advocate

The Responsible Seafood Advocate supports the Global Seafood Alliance's (GSA) mission to advance responsible seafood practices through education, advocacy and third-party assurances.

[Learn More](#)

Search Responsible Seafood Advocate



Advertising Opportunities

[2022 Media & Events Kit](#)

Categories

[Aquafeeds](#) > [Health & Welfare](#) [Health & Welfare](#) > [From Our Sponsors](#) > [Innovation & Investment](#) > [Intelligence](#) > [Responsibility](#) > [Fisheries](#) > [Artículos en Español](#) >

Don't Miss an Article

Featured

- [Health & Welfare](#) [An update on vibriosis, the major bacterial disease shrimp farmers face](#)
- [Intelligence](#) [A seat at the table: Fed By Blue team says aquaculture needs a stronger voice](#)
- [Responsibility](#) [Quantifying habitat provisioning at macroalgae cultivation locations](#)

Popular Tags

All Tags ▼






Recent

- [Fisheries](#) [Second Test: Another filler for the fisheries category](#)
- [Fisheries](#) [Test: This is filler for the fisheries Category](#)
- [Aquafeeds](#) [Test Article](#)
- [Responsibility](#) [Study: Climate change will shuffle marine ecosystems in unexpected ways as ocean temperature warms](#)
- [Health & Welfare](#) [Indian shrimp researchers earn a patent for WSSV diagnostic tool](#)



- [About](#)
- [Membership](#)
- [Resources](#)
- [Best Aquaculture Practices \(BAP\)](#)
- [Best Seafood Practices \(BSP\)](#)
- [GOAL Events](#)
- [Advocate Magazine](#)
- [Aquademia Podcast](#)
- [Blog](#)
- [Contact](#)

Stay up to date with GSA

- 
- 
- 
- 
- 

Copyright © 2024 Global Seafood Alliance
All rights reserved.

[Privacy](#)

[Terms of Use](#)

[Glossary](#)