



- [GOAL Events](#)
- [Advocate Magazine](#)
- [Aquademia Podcast](#)
- [Blog](#)
- [Contact](#)
-
-
-
-
-
- [Log In](#)



- [About](#)
 - [Who We Are](#)
 - [Our History](#)
 - [Our Team](#)
 - [Sustainable Development Goals](#)
 - [Careers](#)
- [Membership](#)
 - [Overview](#)
 - [Our Members](#)
 - [Corporate Membership](#)
- [Resources](#)
- [Certification](#)
 - [Best Aquaculture Practices](#)
 - [Best Seafood Practices](#)

Search...



[Log In](#)

- [About](#)
 - [Who We Are](#)
 - [Our History](#)
 - [Our Team](#)
 - [Sustainable Development Goals](#)
 - [Careers](#)
- [Membership](#)
 - [Overview](#)
 - [Our Members](#)
 - [Corporate Membership](#)
- [Resources](#)
- [Certification](#)
 - [Best Aquaculture Practices](#)
 - [Best Seafood Practices](#)
- [GOAL Events](#)
- [Advocate Magazine](#)
- [Aquademia Podcast](#)
- [Blog](#)
- [Contact](#)



Health & Welfare

Health & Welfare

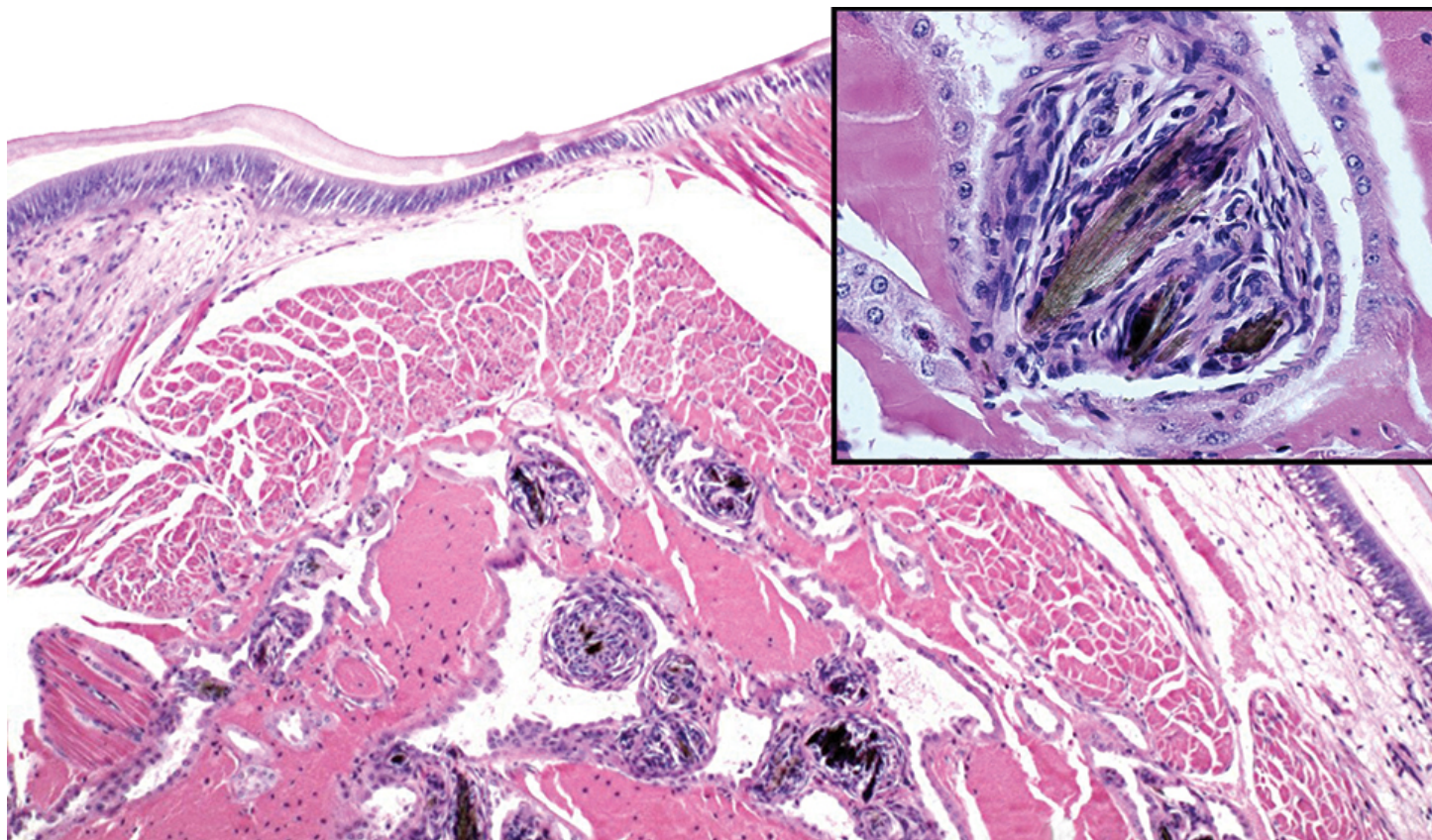
Feed-related melamine risk minimal to shrimp, humans



1 May 2008 Donald V. Lightner, Ph.D. Carlos R. Pantoja, Ph.D. Rita M. Redman Jayagopal Pozoth Menon



Wheat gluten, binder and protein source in shrimp feeds, likely source of contamination



This magnified view of shrimp antennal glands shows melamine/cyanuric crystals as brownish-green needle- and plate-like structures. The inset at higher magnification shows several crystals encapsulated by shrimp inflammatory cells.

Pet food-related outbreaks of Melamine-Associated Renal Failure (MARF) in dogs and cats in 2004 and 2007 brought widespread attention to the use of melamine-tainted ingredients in animal feeds. The 2007 outbreaks of MARF were linked to the incorporation of vegetable protein concentrates tainted with melamine and cyanuric acid from China.

In 2007, the United States Food and Drug Administration (FDA) alerted livestock and fish and shrimp feed manufacturers about a voluntary recall of U.S.-made products used in feed production because several were found to contain melamine and related compounds. The products of concern for fish and shrimp feeds were binding agents.

Shrimp testing

In specimens of (*Penaeus monodon*) shrimp submitted to the University of Arizona Aquaculture Pathology Laboratory (APL), especially in mid-2007 and early 2008 from Asia, brownish-green needle- and platelike crystals were observed in multiple granulomas in the ducts of the antennal glands. The histological appearance of these crystals in shrimp was very similar to that of crystals induced by melamine/cyanuric acid in the kidneys of dogs and cats with MARF. The affected *P. monodon* otherwise showed no gross or histological signs of disease and little or no elevation in mortality rates.

Because other shrimp specimens from the same facility but fed a different feed did not present these unique lesions, samples of both “normal” and suspect feeds were submitted to a state-of-the-art analytical lab in Singapore for melamine testing. Melamine was not detected in the normal feed, while the two samples of suspect feed contained 112.50 and 183.39 ppm of melamine, respectively.

The pathology associated with the contaminated feed was discovered as a result of routine surveillance of shrimp populations being developed as specific pathogen-free stocks. Samples of shrimp are taken on a predetermined schedule for both molecular testing for recognized shrimp diseases and histological examination to detect other diseases that might otherwise go undetected or develop into major problems before corrective measures can be taken.

Feed trial

The melamine-tainted feeds were purchased from a feed supplier in Indonesia. However, no information was available on which ingredient or ingredients in the feeds contained melamine/cyanuric acid. Because wheat gluten is often used as a binder and protein source in shrimp feeds, and because this product was identified as the source of the melamine/cyanuric acid contamination in U.S. pet foods, it may be a likely source of the contamination.

Subsequent testing of one of the suspect feeds with (*Penaeus vannamei*) at the APL in Tucson gave some unexpected results. Within 10 days of initiating feeding, the test shrimp developed prominent granulomas in their antennal glands with the characteristic crystals. After nearly 40 days of feeding, test shrimp showed no obvious external signs of disease, stress or mortalities.

FDA: Unlikely risk

Despite concerns about melamine-contaminated feeds given to animals, FDA scientists in an interim safety/risk assessment determined that “based on currently available data, the consumption of pork, chicken, domestic fish and eggs from animals inadvertently fed animal feed contaminated with melamine and its analogs is very unlikely to pose a human health risk.”

The findings from the APL study, in which melamine-associated pathology is limited to the presence of insoluble crystals of salts of melamine/cyanuric acid in antennal glands, are consistent with the FDA assessment. This is because shrimp heads – the location of the antennal glands – are generally not eaten, and the crystals are totally insoluble in the wide range of polar and nonpolar solvents used in histological work.

(Editor’s Note: This article was originally published in the May/June 2008 print edition of the Global Aquaculture Advocate.)

Now that you've finished reading the article ...

... we hope you'll consider supporting our mission to document the evolution of the global aquaculture industry and share our vast network of contributors' expansive knowledge every week.

By becoming a Global Seafood Alliance member, you're ensuring that all of the pre-competitive work we do through member benefits, resources and events can continue. Individual membership costs just \$50 a year.

Not a GSA member? Join us.

[Support GSA and Become a Member](#)

Authors



- Donald V. Lightner, Ph.D.

Aquaculture Pathology Laboratory
Department of Veterinary Science and Microbiology
University of Arizona
Tucson, Arizona 85721 USA

-  Carlos R. Pantoja, Ph.D.

Carlos R. Pantoja, Ph.D.

Aquaculture Pathology Laboratory
Department of Veterinary Science and Microbiology
University of Arizona
Tucson, Arizona 85721 USA

-  Rita M. Redman

Rita M. Redman

Aquaculture Pathology Laboratory
Department of Veterinary Science and Microbiology
University of Arizona
Tucson, Arizona 85721 USA

-  Jayagopal Pozoth Menon

Jayagopal Pozoth Menon

Rajiv Gandhi Centre for Aquaculture
Andaman and Nicobar Islands, India

Share

- [✉ Share via Email](#)
- [🐦 Share on Twitter](#)
- [f Share on Facebook](#)
- [in Share on LinkedIn](#)

Tagged With

[melamine](#) [Shrimp feed](#) [Donald V. Lightner](#) [Carlos R. Pantoja](#)

Related Posts

Health & Welfare

[AHPN inferences based on behavior of vibrio bacteria](#)

Vibrio parahaemolyticus, a strain of which is the cause of acute hepatopancreatic necrosis (AHPN), has both virulent and benign strains. This strain colonizes the stomachs of shrimp by the formation of a biofilm, which protects it from antibiotics and other potential treatments.

Health & Welfare

[Development of 1-monoglycerides against AHPND](#)

1-monoglycerides are known for their antibacterial and antiviral effects in the human pharmaceutical and animal husbandry industries. As a substitution for the preventive use of antibiotics, these molecules are being evaluated in the fight against AHPND.

Health & Welfare

[Early Mortality Syndrome affects shrimp in Asia](#)

Early Mortality Syndrome is a new disease that has been detected at shrimp farms in Asia. It appears within 30 days of stocking and causes symptoms that include lethargy; soft, darkened shells and mottling of the carapace.

Health & Welfare

[Biosecurity principles for sustainable production using SPF shrimp](#)

Basic components of biosecurity include knowledge of diseases, adequate detection methods and the use of “clean” shrimp stocks.

About The Advocate

The Responsible Seafood Advocate supports the Global Seafood Alliance’s (GSA) mission to advance responsible seafood practices through education, advocacy and third-party assurances.

[Learn More](#)

Search Responsible Seafood Advocate



Advertising Opportunities

[2022 Media & Events Kit](#)

Categories

[Aquafeeds](#) > [Health & Welfare](#) [Health & Welfare](#) > [From Our Sponsors](#) > [Innovation & Investment](#) > [Intelligence](#) > [Responsibility](#) > [Fisheries](#) > [Artículos en Español](#) >

Don't Miss an Article

Featured

- [Health & Welfare](#) [An update on vibriosis, the major bacterial disease shrimp farmers face](#)
- [Intelligence](#) [A seat at the table: Fed By Blue team says aquaculture needs a stronger voice](#)
- [Responsibility](#) [Quantifying habitat provisioning at macroalgae cultivation locations](#)

Popular Tags

All Tags ▼






Recent

- [Fisheries](#) [Second Test: Another filler for the fisheries category](#)
- [Fisheries](#) [Test: This is filler for the fisheries Category](#)
- [Aquafeeds](#) [Test Article](#)
- [Responsibility](#) [Study: Climate change will shuffle marine ecosystems in unexpected ways as ocean temperature warms](#)
- [Health & Welfare](#) [Indian shrimp researchers earn a patent for WSSV diagnostic tool](#)



- [About](#)
- [Membership](#)
- [Resources](#)
- [Best Aquaculture Practices \(BAP\)](#)
- [Best Seafood Practices \(BSP\)](#)
- [GOAL Events](#)
- [Advocate Magazine](#)
- [Aquademia Podcast](#)
- [Blog](#)
- [Contact](#)

Stay up to date with GSA

- 
- 
- 
- 
- 

Copyright © 2024 Global Seafood Alliance
All rights reserved.

[Privacy](#)

[Terms of Use](#)

[Glossary](#)