



- [GOAL Events](#)
- [Advocate Magazine](#)
- [Aquademia Podcast](#)
- [Blog](#)
- [Contact](#)
-
-
-
-
-
- [Log In](#)



- [About](#)
 - [Who We Are](#)
 - [Our History](#)
 - [Our Team](#)
 - [Sustainable Development Goals](#)
 - [Careers](#)
- [Membership](#)
 - [Overview](#)
 - [Our Members](#)
 - [Corporate Membership](#)
- [Resources](#)
- [Certification](#)
 - [Best Aquaculture Practices](#)
 - [Best Seafood Practices](#)

Search...



[Log In](#)

- [About](#)
 - [Who We Are](#)
 - [Our History](#)
 - [Our Team](#)
 - [Sustainable Development Goals](#)
 - [Careers](#)
- [Membership](#)
 - [Overview](#)
 - [Our Members](#)
 - [Corporate Membership](#)
- [Resources](#)
- [Certification](#)
 - [Best Aquaculture Practices](#)
 - [Best Seafood Practices](#)
- [GOAL Events](#)
- [Advocate Magazine](#)
- [Aquademia Podcast](#)
- [Blog](#)
- [Contact](#)



Health & Welfare

Health & Welfare

Assessment of supplemental Bacillus probiotics in whiteleg shrimp juveniles



26 March 2018 Jee Eun Han, DVM, Ph.D. Ji Eun Kim, M.S. Sung Hun Kim, Ph.D. Jong-Su Eun, Ph.D. Se Min Choi, Ph.D.



Feeding study sees improvement in growth performance, feed utilization, survival



Dietary supplementation of *Bacillus* probiotics improved growth, feed efficiency and survival (under high ammonia levels) of whiteleg shrimp juveniles. Photo by Darryl Jory.

Bacillus probiotics are spore-forming bacteria that are heat stable and are able to survive passage through the acidic stomach and make it to the gut, where they confer unique health benefits. In this study, we investigated the effects of supplementing three *Bacillus* species (*B. subtilis*, *B. pumilus*, and *B. licheniformis*) on growth performance, feed efficiency and survival (ammonium stress) in Pacific whiteleg shrimp juveniles. We thank all the staff at Nong Lam University, Ho Chi Minh City, Vietnam, for their technical assistance.

Experimental design

Whiteleg shrimp (*Litopenaeus vannamei*) postlarvae were cultured and acclimated in confined water tanks for one month to reach an average weight of 2.3 grams. From these, selected shrimp juveniles ($n = 600$) were randomly distributed into 500-liter circular tanks at a stocking density of 100 shrimp per tank. The experimental system included six tanks connected through a recycled water system with mechanical aeration and a bio-filter, and salinity was kept at 10 ppt.

Experimental diets were prepared by supplementing three powder forms of *Bacillus* spp. (1×10^9 CFU/g) with a combination of *B. subtilis*, *B. pumilus* and *B. licheniformis* at 0.2 percent, and a 40 percent fishmeal-based diet was formulated as a basal diet. Two dietary treatments were tested, and a control (without probiotics vs. with probiotics). The bacteria were originally isolated from seawater or intestinal microflora of shrimp and cultured, and their purity was routinely monitored. The tested *Bacillus* spp. were provided in an endospore form from the Bio-Resources Research Institute, CJ CheilJedang Corp. (Suwon, South Korea).

In the shrimp bioassay, shrimp were fed to satiation four times per day with the feeding rate estimated from 3 to 10 percent body weight. Unfed feed was collected, preserved in freezer, and used to calculate the real consumed feed from the distributed sum. Each diet was fed in three tanks.

Growth performance and feed utilization

The feeding trial lasted for eight weeks and the experimental animals reach a harvest weight of 15 to 20 grams. All shrimp in each experimental unit was weighed (initial and final weights). To evaluate growth performances and feed utilization of the shrimp, daily weight gain (DWG), specific growth rate (SGR) and feed conversion ratio (FCR) were calculated. Mortality in each tank was recorded daily during the entire experimental period in order to calculate survival rate. The following formulas were used

$DWG = [(W_{t2} - W_{t1}) / (T2 - T1)] \times 100 \text{ (g/shrimp/day)}$

where:

Wt1 = average weight at the beginning of the experiment

Wt2 = average weight at the end of the experiment

$SGR = [(\ln W2 - \ln W1) / (T2 - T1)] \times 100 \text{ (%/day)}$

where:

W2 = average weight at the end of the experiment

W1 = average weight at the beginning of the experiment

T2 – T1 = duration of the experiment

$FCR = \text{total feed intake/shrimp growth } (W2 - W1)$

Feed intake = total feed intake/total shrimp (g/shrimp/day)

Han, Bacillus, Table 1

	Control group	Probiotics group
Initial weight (g)	2.37	2.32
Final weight (g)	16.8	17.7
DWG (g/shrimp/day)	0.26	0.27
SGR (%/day)	3.47	3.62
Feed intake (g/shrimp/day)	0.22	0.24
FCR 1	2.30	2.06
FCR 2	2.14	1.97
Survival rate (%)	74.0	78.7

Table 1. Growth performances, feed utilization and survival rate of shrimp fed experimental diet for eight weeks.

DWG = daily weight gain

SGR = specific growth rates

FCR 1 = total feed intake per tank/total shrimp growth per tank (total W2 – total W1)

FCR 2 = feed per shrimp/(average final weight – average initial weight)

Ammonia challenge test

At the end of the feeding trial, 15 shrimp in each tank were maintained in the tank and then the ammonia concentration in the tanks was increased to 40 to 50 mg/L at pH 8.0 (lethal dose for 50 percent of animals, LD₅₀) using ammonium chloride (NH₄Cl), to evaluate stress resistance of shrimp. Mortality was observed until the shrimp all died, and results are shown in Fig. 1.

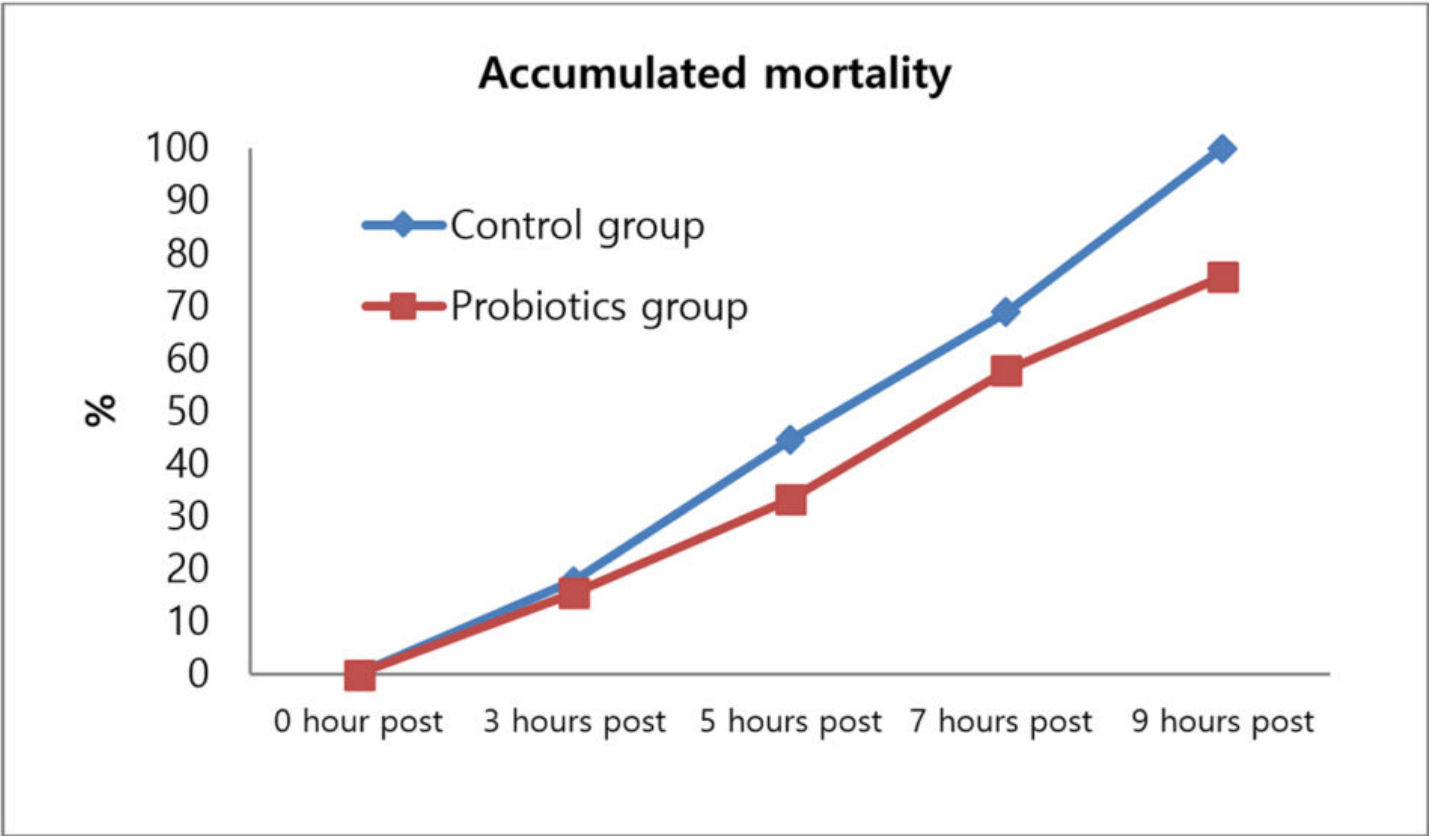


Fig. 1: Accumulated mortality rate of shrimp exposed to high ammonia concentration in hours post challenge.

Conclusions

During the study, all experimental diets were readily accepted by the Pacific whiteleg shrimp at the start of the feeding trial, and they consumed those aggressively during the eight weeks of the feeding trial. Results showed that when the *Bacillus* species were supplemented in an appropriate concentration into feeds, the growth and feed efficiency of whiteleg shrimp could be improved; and that the survival rate of shrimp could be greatly improved under both normal and stressed (high ammonia levels) conditions. Further studies are needed to evaluate the effectiveness of the *Bacillus* probiotics on shrimp in field trials.

Authors




Jee Eun Han, DVM, Ph.D.
Biotechnology Research Institute
CJ CheilJedang, Suwon
Republic of Korea
[109,111,99,46,108,105,97,109,103,64,51,50,50,49,101,106,110,97,104]

Ji Eun Kim, M.S.
Ji Eun Kim, M.S.

Biotechnology Research Institute
CJ CheilJedang, Suwon
Republic of Korea


[116,101,110,46,106,99,64,55,109,105,107,46,110,117,101,105,106]

-  Sung Hun Kim, Ph.D.

Sung Hun Kim, Ph.D.

Biotechnology Research Institute
CJ CheilJedang, Suwon
Republic of Korea

[116,101,110,46,106,99,64,109,105,107,46,110,117,104,103,110,117,115]

-  Jong-Su Eun, Ph.D.

Jong-Su Eun, Ph.D.

Biotechnology Research Institute
CJ CheilJedang, Suwon
Republic of Korea

[116,101,110,46,106,99,64,110,117,101,46,117,115,103,110,111,106]





-  Se Min Choi, Ph.D.

Se Min Choi, Ph.D.

Biotechnology Research Institute
CJ CheilJedang, Suwon
Republic of Korea

[116,101,110,46,106,99,64,105,111,104,99,46,109,115]

Share

-  [Share via Email](#)
-  [Share on Twitter](#)
-  [Share on Facebook](#)
-  [Share on LinkedIn](#)

Tagged With

[Jee Eun Han](#) [probiotics](#) [Ji Eun Kim](#) [Sung Hun Kim](#) [Jong Su Eun](#) [Bacillus](#) [Se Min Choi](#) [whiteleg shrimp](#)

Related Posts

Health & Welfare

[Bacillus probiotics improve hatchery, nursery production in EMS-hit Mexico](#)

In early 2014, a trial to evaluate the effects of a mixture of Bacillus strains on early mortality syndrome bacteria during the larviculture and nursery phases for shrimp was carried out at a commercial hatchery in Mexico.

Health & Welfare

[Bacillus probiotics benefit tilapia rearing under challenging conditions in Brazil](#)

A recent study that evaluated the benefits of using probiotics with a balanced mixture of Bacillus bacteria strains to inhibit pathogenic bacteria in tilapia.

Health & Welfare

[Prebiotics and their role in sustainable aquaculture](#)

Results of a study to evaluate a commercial prebiotic on growth of European sea bass juveniles indicates this product can improve fish growth performance and allowing for the fish to reach the marketable size earlier, boosting their immune status, and reducing potential fish losses due to pathogens.

[Health & Welfare](#)

[Biosecurity practices on fish farms need beefing up](#)

Biosecurity measures and preventive strategies are essential in any biological production chain. Properly planned and implemented biosecurity programs will enhance animal health, production and economics.

About The Advocate

The Responsible Seafood Advocate supports the Global Seafood Alliance's (GSA) mission to advance responsible seafood practices through education, advocacy and third-party assurances.

[Learn More](#)

Search Responsible Seafood Advocate



Advertising Opportunities

[2022 Media & Events Kit](#)

Categories

[Aquafeeds](#) > [Health & Welfare](#) [Health & Welfare](#) > [From Our Sponsors](#) > [Innovation & Investment](#) > [Intelligence](#) > [Responsibility](#) > [Fisheries](#) > [Artículos en Español](#) >

Don't Miss an Article

Featured

- [Health & Welfare](#) [An update on vibriosis, the major bacterial disease shrimp farmers face](#)
- [Intelligence](#) [A seat at the table: Fed By Blue team says aquaculture needs a stronger voice](#)
- [Responsibility](#) [Quantifying habitat provisioning at macroalgae cultivation locations](#)

Popular Tags

All Tags


Recent

- Fisheries [Second Test: Another filler for the fisheries category.](#)
- Fisheries [Test: This is filler for the fisheries Category.](#)
- [Aquafeeds Test Article](#)
- [Responsibility Study: Climate change will shuffle marine ecosystems in unexpected ways as ocean temperature warms](#)
- [Health & Welfare Indian shrimp researchers earn a patent for WSSV diagnostic tool](#)



- [About](#)
- [Membership](#)
- [Resources](#)
- [Best Aquaculture Practices \(BAP\)](#)
- [Best Seafood Practices \(BSP\)](#)
- [GOAL Events](#)
- [Advocate Magazine](#)
- [Aquademia Podcast](#)
- [Blog](#)
- [Contact](#)

Stay up to date with GSA

- 
- 
- 
- 
- 

Copyright © 2024 Global Seafood Alliance
All rights reserved.

[Privacy](#)

[Terms of Use](#)

[Glossary](#)